

REMINGTON®

EST. NEW YORK 1937

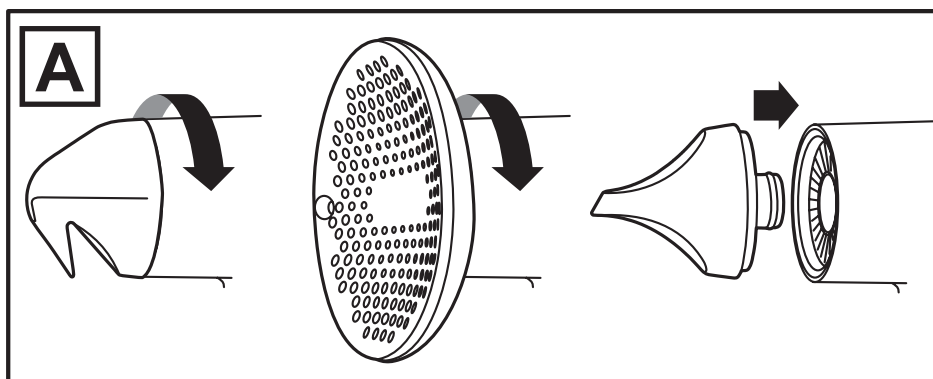
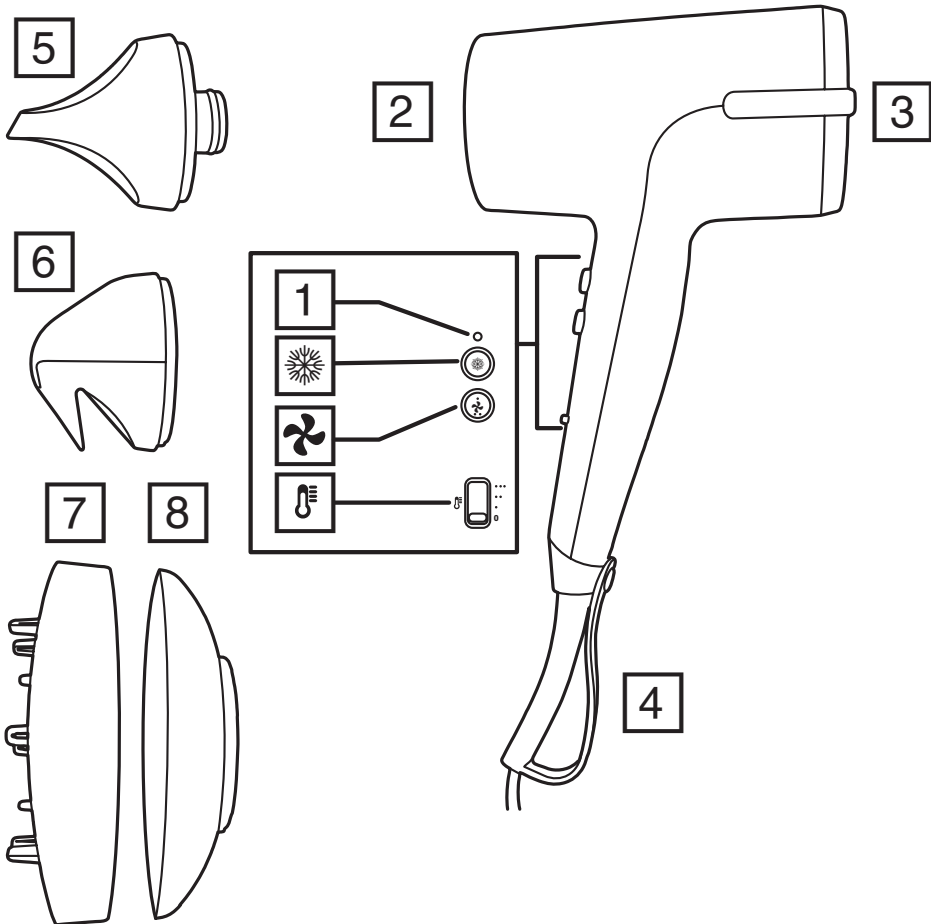


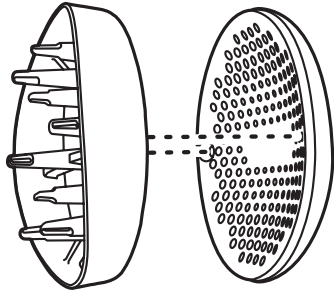
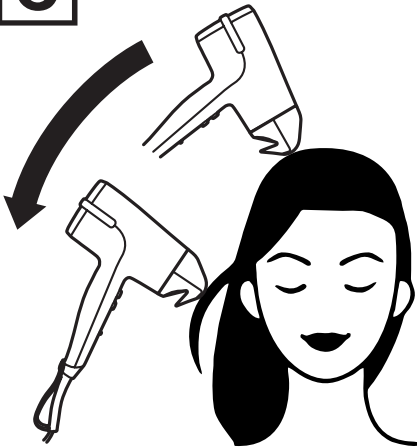
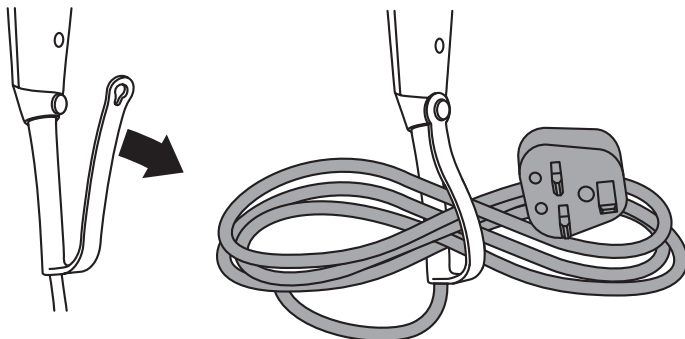
Remington One Dry & Style Hairdryer D6077

 remington-europe.com

Register online for an EXTRA year guarantee

Visit uk.remington-europe.com/product-registration You must register within 28 days of purchase.



B**C****D****E**




Thank you for buying your new Remington® product. Please read these instructions carefully and keep them safe. Remove all packaging before use.

IMPORTANT SAFEGUARDS

- This appliance can be used by children aged from 8 years and above and persons with reduced physical, sensory or mental capabilities or lack of experience and knowledge if they have been supervised/instructed and understand the hazards involved. Children shall not play with the appliance. Cleaning and user maintenance shall not be done by children unless they are older than 8 and supervised. Keep the appliance and cable out of reach of children under 8 years.
 - ⊘ Do not use this appliance near bathtubs, showers, basins or other vessels containing water.
 - When the appliance is used in a bathroom, unplug it after use since the proximity of water presents a hazard even when the appliance is switched off.
 - For additional protection, the installation of a residual current device (RCD) having a rated residual operating current not exceeding 30 mA is advisable in the electrical circuit supplying the bathroom*.
- * Currently, the fitting in a bathroom of an electrical socket suitable or capable of operating the appliance is not permitted in the UK (see BS7671).
- If the supply cord of this unit becomes damaged, discontinue use immediately and return the appliance to your nearest authorised Remington® service dealer for repair or replacement in order to avoid a hazard.
 - Always ensure the voltage to be used corresponds to the voltage stated on the unit before plugging the appliance into the mains socket.
 - Keep direct airflow away from eyes or other sensitive areas.
 - Do not allow any part of the appliance touch the face, neck or scalp.
 - During use, always ensure the inlet and outlet grilles are not blocked in any way as this will cause the unit to automatically stop. If this should occur, switch off and allow the unit to cool.
 - Keep the power plug and cord away from heated surfaces.
 - Do not leave the appliance unattended while plugged in.
 - Do not place the appliance on any soft furnishings.

- Do not use attachments other than those we supply.
- Do not set the appliance down while still on.
- Do not twist or kink the cable, or wrap it round the appliance.
- Do not use the appliance if it is damaged or malfunctions.
- Check the cord regularly for any sign damage.
- This appliance is not intended for commercial or salon use.

PARTS


- | | |
|----------------------------------|--|
| 1. Cool shot on light | 8. Gentle drying diffuser attachment |
| 2. Outlet grille | Controls: |
| 3. Inlet grille |  Cool shot button |
| 4. Hang up loop/cord storage |  Speed setting button |
| 5. Concentrator attachment |  Heat setting switch |
| 6. Flyaway tamer attachment | Accessories: |
| 7. Curl defining diffuser prongs | • Storage bag |
-

INSTRUCTIONS FOR USE

Fitting/Removing attachments (Fig A)

- CAUTION: Attachments can become hot during use, let them cool before removing.
- TIP: Holding the cool shot button for a few seconds before removing accessories can help to reduce their temperature.
- Attach the diffuser/flyaway tamer by fitting to the front of the hairdryer and twisting clockwise to lock in place (Fig. A).
- Attach the concentrator attachment by pushing on to the front of the hairdryer. The concentrator can be rotated as required.

Using

- Wash and condition your hair as normal.
 - Squeeze out excess moisture with a towel and comb through.
 - Hairsprays contain flammable material – do not use while using this product.
1. Plug the product into the mains power supply.
 2. To switch on, select your desired temperature setting using the heat setting switch. Settings are 0 off, ● low, ●● medium and ●●● high.
 3. Select the desired air speed using the speed setting button. Press the button in for fast, press the button and release it for slow.
 4. To set your style with cold air, press the cool shot button () and the light will illuminate. Press again to turn off cool shot.

How to create smooth styles with the concentrator attachment:

1. For best results, dry your hair as normal until it is about 70% dry. Then turn off your dryer and section your hair into manageable areas.
2. Select a high heat and fast speed setting.
3. Starting on the lower sections of hair, work on one section at a time. Use a round brush (not included) to grip the underneath of your hair and run the concentrator attachment down the section until it's 100% dry.
4. Activate the cool shot and run the nozzle down the section again to set your style in place.

How to finish straight styles with the flyaway tamer attachment:

1. For best results use on dry straight / pre-straightened hair.
2. Select a high heat and fast speed setting.
3. Start at the top of your hair near the roots with the attachment held as close to the hair as possible. Your hair will be attracted to the attachment.
4. Slowly run down the length of your hair (Fig C)
5. Repeat around the crown of your head, until the desired smoothing is achieved.

How to gently dry curls with the gentle drying diffuser attachment:

1. Select a high heat and slow speed setting.
2. Start drying by hovering the diffuser bowl over your roots and then slowly move over your lengths until 100% dry (Fig. D).
3. The gentle diffused airflow speeds up air drying without making contact and disturbing your curls' natural shape.

How to dry and define curls with the curl defining diffuser attachment:

1. The finishing diffuser prongs are fitted to the bowl and held in place with magnets (Fig. B).
2. Select a medium heat and slow speed setting.
3. Turn your head upside down and gently place your hair into the diffuser bowl slightly rotating the dryer as you style.

OVERHEAT PROTECTION

In the event of overheating, the appliance may either stop unexpectedly or start to blow cold air. Overheating is usually caused by a blocked grille/filter. If this happens, immediately unplug the appliance and refer to STORAGE, CLEANING AND MAINTENANCE to clean the grille/filter. If, after doing this overheating continues to happen, stop using the appliance and contact Customer Service.

RECYCLING



To avoid environmental and health problems due to hazardous substances, appliances and rechargeable and non-rechargeable batteries marked with one of these symbols must not be disposed of with unsorted municipal waste. Always dispose of electrical and electronic products and, where applicable, rechargeable and non-rechargeable batteries, at an appropriate official recycling/collection point.

SERVICE AND GUARANTEE



Defects affecting product functionality appearing within the guarantee period will be corrected by replacement or repair at our option provided the product is used and maintained in accordance with the instructions. Your statutory rights are not affected.

This warranty shall not be valid where it is contrary to U.S. and other applicable laws, or where the warranty would be prohibited under any economic sanctions, export control laws, embargos, or other restrictive trade measures enforced by the United States or other applicable jurisdictions. This includes, without limitation, any warranty claims implicating parties from, or otherwise located in, Cuba, Iran, North Korea, Syria and the Crimea region. To claim an extra 1 year guarantee, register your product online within 28 days of purchase.

Register at: <https://uk.remington-europe.com/product-registration>

Consumables are guaranteed only for their recommended lifecycle. Replacement/spare parts* are excluded and are only covered by a 1 year warranty.

*Examples include, but are not limited to, adaptors, haircare attachments, grooming accessories, etc.

SERVICE CENTRE

United Kingdom

 0800 212 438 (free call mainland UK)

Spectrum Brands (UK) Ltd

Fir Street, Failsworth, Manchester

M35 0HS, UK

www.remington.co.uk

Product support:

productsupport@remington.co.uk

Ireland

 142 951 40

Remington Consumer Products,

Unit B12, Ballymount Corporate Park,

Ballymount, Dublin 12

<https://ie.remington-europe.com>

Product support:

productsupport@remington.co.uk

Ref. No. D6077

Type No. D31A

23/UK/ D6077 T22-7002932 Version 03 /23

Remington® is a Registered Trade Mark of Spectrum Brands, Inc., or one of its subsidiaries.

Spectrum Brands (UK) Ltd

Fir Street,

Failsworth,

Manchester

M35 0HS

remington-europe.com

© 2023 Spectrum Brands, Inc.