

# REMINGTON®

EST. NEW YORK 1937

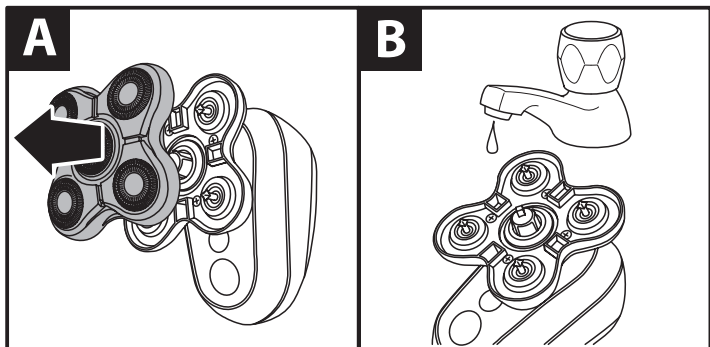
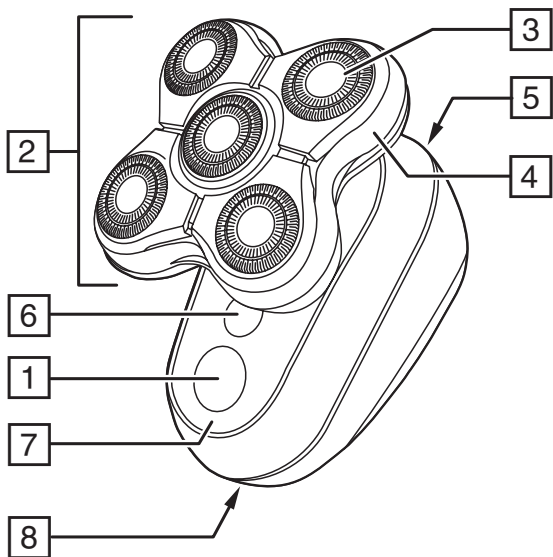


## **RX7 Ultimate Series Head Shaver XR1600**

 [remington-europe.com](http://remington-europe.com)

**Register online for an EXTRA year guarantee**

Visit [uk.remington-europe.com/product-registration](http://uk.remington-europe.com/product-registration) You must register within 28 days of purchase.




Thank you for buying your new Remington® product. Please read these instructions carefully and keep them safe. Remove all packaging before use.

---

## IMPORTANT SAFEGUARDS

---

- This appliance can be used by children aged from 8 years and above and persons with reduced physical, sensory or mental capabilities or lack of experience and knowledge if they have been supervised/instructed and understand the hazards involved. Children shall not play with the appliance. Cleaning and user maintenance shall not be done by children unless they are older than 8 and supervised. Keep the appliance and cable out of reach of children under 8 years.
- Always check the appliance before you use it. Do not use the appliance if it is damaged, as this may cause injury.
-  Suitable for use in a bath or shower.
- Do not use the product with a damaged cord. A replacement can be obtained via our International Service Centres.
- The battery in this device is not replaceable.
- Do not use the appliance if it is damaged or malfunctions.
- Do not use attachments other than those we supply.
- This appliance should never be left unattended when plugged into a power outlet, except when charging.
- Keep the power plug and cord away from heated surfaces.
- Do not plug or unplug the appliance with wet hands.
- Do not twist or kink the cable, or wrap it round the appliance.
- This appliance is not intended for commercial or salon use.

---

## PARTS

---

1. On/off button
  2. Head assembly
  3. Individual flexing blades
  4. Hairpocket
  5. Pop-up trimmer
  6. Turbo button
  7. Charging indicator lights
  8. Charging connector
- Not shown:
- Head guard
  - Cleaning brush
  - Travel pouch
- 

## CHARGING YOUR APPLIANCE

---

1. Ensure the product is switched off.
2. Connect the product to the USB cable and then connect the USB end of the cable to a powered USB port.
3. Charge for 2 hours when using for the first time. This first charge is important to the shaver's battery life.

### CHARGING INDICATOR LIGHTS

#### During charging

Lights	Charge level
○	0-25%
●○	25-50%
●●○	50-75%
●●●○	75-99%

● = on ○ = flashing

Once fully charged, all 4 lights will stay on for 5 minutes and then go off.

#### Charge remaining

After use, when you switch off your shaver, the charging indicator lights show the remaining charge for 5 seconds.

Lights	Charge remaining
●●●○	99-75%
●●○	75-50%
●○	25-50%
○	25% or less

### **During use**

The lights will illuminate backwards and forwards during use in a cycling pattern.

- Your head shaver cannot be used when it is charging.
- When empty, the battery should be charged for 2 hours for a full charge and will provide up to 60 minutes of shaving time.
- To preserve the life of the battery do not charge the battery after each use. The best practice is to use the shaver until there is only a single light left flashing and then recharge.

---

## **INSTRUCTIONS FOR USE**

---

1. Hold the head shaver body in the palm of your hand. Press the on/off button to turn the head shaver on.
2. Press the cutting heads against your scalp. It is not necessary to press hard to shave. Pressing hard does not cut closer and could increase irritation. The cutting head will flex to follow the contours of your head.
3. Move the shaver slowly around your head. You may use linear or circular strokes, whichever works best for your hair.
4. Use a hand held mirror to check the back of your head to confirm a complete and thorough shave. You may also use your other hand to feel for complete and consistent cutting.
5. We do not recommend that you use this product on facial hair.
6. When finished turn the shaver off.

### **TURBO FEATURE**

Use the Turbo feature to shave thick hair. Press the turbo button to operate the shaver in Turbo mode. The charging indicator light pattern will speed up. Press the turbo button again to deactivate turbo mode.

---

## **TIPS**

---

- Do not attempt to shave head hair that is longer than 4 days growth or 2.0 mm. Your head shaver is intended to maintain a shaved look and can be used daily or every two or three days.
- If your hair is longer than 2.0 mm you should trim it down with a hair clipper first before using your head shaver.
- Your head shaver can be used dry or it can be used with shaving cream or gel in the shower.

---

## TRIMMING

---

The pop-up trimmer is located at the top of the shaver body. It can be used for trimming edges of beards, sideburns or ears.

1. To activate the trimmer, turn the shaver on then raise the trimmer by sliding the trimmer release button.
2. Use cutting strokes in the direction opposite to the direction that the trimmer folds away.
3. When finished fold the trimmer into its stored position.

---

## CARE FOR YOUR SHAVER

---

Care for your product to ensure a long lasting performance. We recommend that you clean it after each use.

- When cleaning your shaver, make sure it is turned off and disconnected from the charging cable.

### SAFETY MODE

- Your head shaver will turn itself off and enter safety mode if the demand on the battery is too high. This can be because of inadequate cleaning or excessive hair clippings in the hair pocket.
- If this occurs, open and clean your shaver. The left and right charging indicator lights will flash for ten seconds. After an additional 5 seconds your shaver will reset itself and be ready to operate as normal.

### AFTER EACH USE

1. Pull the cutting head unit off the head assembly (fig. A).
  2. Empty out any hair clippings. The head can be rinsed under a running tap (fig. B).
  3. Use a cleaning brush to remove any shaving debris.
- The shaver is washable and can be cleaned by rinsing under warm water.
  - When using shaving creams or gels with the shaver it is especially important to clean after each use to prevent the gel from drying and clogging the cutters.
  - When cleaning the external surfaces of the shaver, do not use strong detergents or other chemicals.
  - To dry, wipe the surface of the shaver with a dry cloth or towel.
  - The shaver head assembly is designed to be detachable from the shaver body. Simply pull it away from the body of the shaver. To reattach, align it with the opening on the body and click it into position.

---

## BATTERY REMOVAL

---

We strongly recommend that a professional removes the rechargeable battery. Parts of the shaver case, and tools have sharp edges and may cause injury if not handled correctly.

- The rechargeable battery must be removed from the appliance before it is scrapped.
  - Disconnect the charging adapter before removing the battery.
1. Ensure the device is discharged of all power. To do this, switch it on and allow it to run until it stops.
  2. Remove the head assembly by pulling it off.
  3. Using a small screwdriver, pry the front panel off the handle.
  4. Pry off then remove the two side panels.
  5. Using a small flat screwdriver, pry off the display panel.
  6. Unscrew the 4 screws and open the front housing.
  7. Unscrew the 4 screws and remove the rear housing.
  8. Pry the battery from the circuit board.
  9. Disconnect the battery from the two connection wires.
- The battery is to be disposed of safely.
  - Do not attempt to operate the shaver once you have opened it.

---

## RECYCLING

---



To avoid environmental and health problems due to hazardous substances, appliances and rechargeable and non-rechargeable batteries marked with one of these symbols must not be disposed of with unsorted municipal waste. Always dispose of electrical and electronic products and, where applicable, rechargeable and non-rechargeable batteries, at an appropriate official recycling/ collection point.

---

## SERVICE AND GUARANTEE

---



Defects affecting product functionality appearing within the guarantee period will be corrected by replacement or repair at our option provided the product is used and maintained in accordance with the instructions. Your statutory rights are not affected.

This warranty shall not be valid where it is contrary to U.S. and other applicable laws, or where the warranty would be prohibited under any economic sanctions, export control laws, embargos, or other restrictive trade measures enforced by the United States or other applicable jurisdictions. This includes, without limitation, any warranty claims implicating parties from, or otherwise located in, Cuba, Iran, North Korea, Syria and the Crimea region.

To claim an extra 1 year guarantee, register your product online within 28 days of purchase.

Register at: <https://uk.remington-europe.com/product-registration>

Consumables are guaranteed only for their recommended lifecycle. Replacement/spare parts\* are excluded and are only covered by a 1 year warranty.

\*Examples include, but are not limited to, adaptors, haircare attachments, grooming accessories, etc.



---

## SERVICE CENTRE

---

### UNITED KINGDOM

 0800 212 438 (free call mainland UK)

Spectrum Brands (UK) Ltd


Fir Street, Failsworth, Manchester

M35 0HS, UK

[www.remington.co.uk](http://www.remington.co.uk)

[productsupport@Remington.co.uk](mailto:productsupport@Remington.co.uk)

### IRELAND

 142 951 40

Remington Consumer Products,

Unit B12, Ballymount Corporate Park,

Ballymount, Dublin 12

<https://ie.remington-europe.com>

[productsupport@Remington.co.uk](mailto:productsupport@Remington.co.uk)





# **Ref. No. XR1600**

## **Type No. R29A**

22/UK/ XR1600 T22-7002562 Version 05 /22

Remington® is a Registered Trade Mark of Spectrum Brands, Inc., or one of its subsidiaries.

Spectrum Brands (UK) Ltd

Fir Street,

Failsworth,

Manchester

M35 0HS

[remington-europe.com](http://remington-europe.com)

© 2022 Spectrum Brands, Inc.