

REMINGTON®

EST. NEW YORK 1937

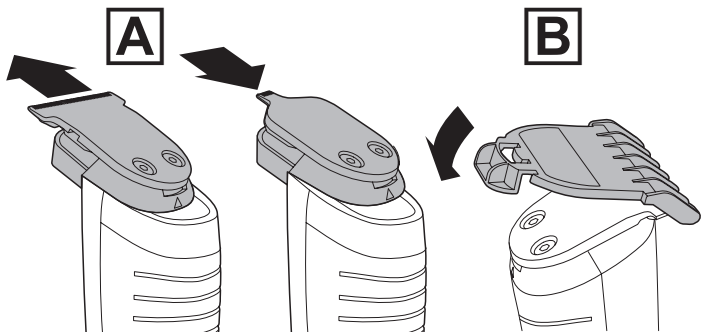
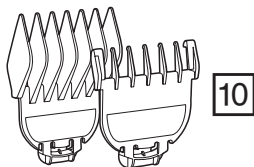
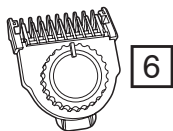
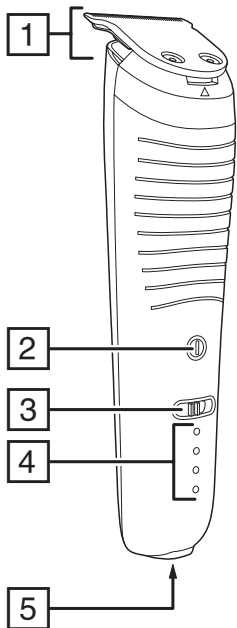


T-Series Hair and Beard Kit MB7050

 www.remington.co.uk


Register online for an **EXTRA** year guarantee

Visit uk.remington-europe.com/product-registration You must register within 28 days of purchase.



Thank you for buying your new Remington® product. Please read these instructions carefully and keep them safe. Remove all packaging before use.

IMPORTANT SAFEGUARDS

- This appliance can be used by children aged from 8 years and above and persons with reduced physical, sensory or mental capabilities or lack of experience and knowledge if they have been supervised/instructed and understand the hazards involved. Children shall not play with the appliance. Cleaning and user maintenance shall not be done by children unless they are older than 8 and supervised. Keep the appliance and cable out of reach of children under 8 years.
- The adaptor contains a transformer. Do not cut off the adaptor to replace it with another plug, as this causes a hazardous situation.
-  Suitable for cleaning under an open water tap.
- **WARNING:** Detach the device from the charging adapter before cleaning it in water.
- Do not use the product with a damaged cord.
- **WARNING:** For recharging the battery, only use the charger supplied with the appliance - type reference PA-0510U (UK).
- Always replace a damaged adaptor with one of the original type.
- The battery in this device is not replaceable.
- Do not use the appliance if it is damaged or malfunctions.
- Do not use attachments other than those we supply.
- This appliance should never be left unattended when plugged into a power outlet, except when charging.
- Keep the power plug and cord away from heated surfaces.
- Do not plug or unplug the appliance with wet hands.
- Do not twist or kink the cable, or wrap it round the appliance.
- This appliance is not intended for commercial or salon use.


PARTS

1. Precision T-blade
 2. On/Off/Turbo switch
 3. Travel lock
 4. Charging indicator lights
 5. Charger connector
 6. Adjustable stubble comb (1.5 - 5mm)
 7. Foil release buttons
 8. Foil shaver attachment
 9. Release button
 10. Fixed guide combs (1.5 - 25 mm)
- Not shown:
- Adaptor
 - Cleaning brush
 - Oil bottle
 - Storage pouch

CHARGING YOUR APPLIANCE

This appliance can be used 'cordless' by powering it from its internal rechargeable battery, or 'corded' by connecting it to the charging adaptor and then the mains power supply. Powering the appliance from the charging adaptor is useful if the rechargeable battery does not have enough charge. Be aware however, that frequent use of the cordless mode will reduce the life of the rechargeable battery.

Before using your trimmer for the first time, charge for 4 hours.

1. Ensure the product is switched off.
2. Connect the charging adaptor to the product and then to the mains.
3. Ensure that the travel lock switch is in the unlocked position ().
4. The charging lights will light up in sequence during charging and remain on when fully charged as long as the charging adapter is plugged in.

CHARGE REMAINING INDICATOR LIGHTS

Light colour	Charge Level Remaining				5 minute run time
	100%	70%	40%	10%	
Blue	○	●	●	●	●
	○	○	●	●	●
	○	○	○	●	●
Red	●	●	●	○	☀
On	○	Off	●	Flashing	☀

- Your trimmer cannot be overcharged. However, if it is not going to be used for an extended period of time (2-3 months), unplug it from the mains and store.

- To preserve the life of your batteries, recharge them for 4 hours at least every 6 months.
- On a full charge, your trimmer will run for up to 5 hours of cordless usage.

CORDED USE

- Connect the charging adaptor to the product then to the mains.
- The charging lights will come on.

TRAVEL LOCK

- Your trimmer has a travel lock which helps to preserve the battery charge during storage.
- To lock, slide the travel lock to the locked (🔒) position.

ATTACHMENTS

TO FIT AND REMOVE T-BLADE ATTACHMENT (FIG. A)

Ensure that the device is switched off before fitting or removing attachments.

- To remove, slide the attachment forwards with your thumb. The foil shaver has a release button which must be pressed before it can be slid off.
- To fit, slide the attachment onto the body until it clicks into place.

FITTING AND REMOVING FIXED GUIDE COMBS (FIG. B)

To Fit

- Hook the front of the guide comb over the teeth of the T-blade.
- Press the back of the guide comb down until it clicks into place.

To Remove

- Lift the tab on the back of the guide comb upwards until it comes free from the T-blade.

ADJUSTABLE STUBBLE COMB

- Fit the adjustable stubble comb in the same way as you would fit a fixed guide comb.
- The 1.5 - 5 mm comb can be adjusted by turning the wheel to the desired setting. Turn the wheel clockwise for longer length and anticlockwise for shorter length.
- The indicator on the wheel will point to the chosen setting.
- Use the trimmer without the adjustable comb for trimming hair close to the skin. This will trim hair to 1.0 mm, holding the blades perpendicular to the skin will trim hair to 0.5 mm.

INSTRUCTIONS FOR USE

- Comb facial hair with a fine comb before you start trimming.
- Comb your hair in the direction that it grows so that the hairs are at their maximum height and facing in the same direction.
- After trimming, lightly go over the trimmed areas with the foil to get a smooth clean finish.
- Since all hairs do not grow in the same direction, you may want to try different trimming positions (i.e. upwards, downwards or across) for better results.
- Hair should be dry and free from any waxes or lotions.
- If hair builds up during use, switch the unit off, remove any attachment in use and clean any excess hair clippings from the attachment and groomer.

ON/OFF/TURBO MODE

- Switch the trimmer on by pressing the On/Off/Turbo switch once for normal mode, again for Turbo mode and a third time to turn the trimmer off.
- Turbo mode is for thicker beards or heavier areas of facial hair and provides a boost in power.

BEARD STYLING AND MAINTENANCE

- Attach the adjustable stubble comb or a fixed guide comb to the T-blade. If you are trimming for the first time start with the maximum trimming length setting.
- Turn the unit on.
- Start trimming under the chin following the line of the jaw.
- Place the flat top of the trimmer comb against the skin.
- Slowly slide through the hair. Work upwards towards the ear and upper beard line. Repeat from different directions as necessary.
- Tidy the beard edges using the T-blade. Use slow controlled movements to create contoured lines.
- If hair builds up in the trimmer comb during the trimmer process, switch the unit off, pull the comb and brush the hair off.

HAIR CLIPPING

Step 1: Nape of the neck

1. Attach the 3mm or 6mm fixed comb.
2. Hold the trimmer with the blade teeth pointing upwards. Start at the centre of the head at the base of the neck.
3. Slowly lift the trimmer, working upwards and outwards through the hair trimming just a little at a time.

Step 2: Back of the head

- With the 12mm or 18mm guide comb attached, cut the hair at the back of the head.

Step 3: Side of the head

- With the 3mm or 6mm guide comb attached, trim sideburns. Then change to the longer 9mm guide comb and continue to cut the top of the head.

Step 4: Top of the head

- Use the longer length fixed combs of 18mm or 25mm to cut hair on top of the head against the direction in which the hair normally grows.
- Always work from the back of the head.

Step 5: The finishing touches

- Use the trimmer without a comb for close trimming around the base and sides of the neck.
- To produce a clean straight line at the sideburns, place the trimmer at right angles to the head, tips of the blades lightly touching the skin and then work downwards.

USING THE FOIL SHAVER

- Fit the foil shaver attachment.
- Use short, well-controlled linear movements. Use your free hand to stretch your skin. This encourages the hair to stand upright, making it easier to shave.
- Note: always trim your facial hair before shaving.

CLEANING AND MAINTENANCE

Care for your appliance to ensure a long lasting performance. We recommend that you clean it after each use.

AFTER EACH USE

- Brush any accumulated hairs from the trimmer and attachment heads.
- The easiest and most hygienic way to clean the trimmer is under the tap.
- Place one or two drops of oil on the blades. Turn the appliance on to distribute the oil evenly, wipe off any excess oil.

REPLACING THE FOILS AND CUTTERS

To ensure continued high quality performance from your shaver, we recommend the foils and cutters are replaced regularly.

Signs that your foils and cutters need replacing

- Irritation: as foils get worn, you may experience skin irritation.
- Pulling: as the cutters wear, your shave may not feel as close and you may feel the cutter pulling your hair.
- Wear through: you may notice that the cutters have worn through the foils.

To replace the foil

- Remove the shaving head assembly by pressing the shaver head release buttons on both sides of the shaver.
- Insert a flat bladed screwdriver between the sides of the foil screen and the head assembly and pull away from the notches.
- To reassemble, slide the foil into the shaving head and click into position.
- Hold the foil by the plastic frame to prevent damage.

Replacing the cutters

- Remove the shaving head assembly by pressing the shaver head release buttons on both sides of the shaver.
- Grasp the cutter between your thumb and forefinger and pull upwards.
- Snap the new cutter into the oscillator tip.
- Note: DO NOT press on the cutter ends as this may cause damage.

BATTERY REMOVAL

We strongly recommend that a professional removes the rechargeable battery. Parts of the shaver case, and tools have sharp edges and may cause injury if not handled correctly.

- The rechargeable battery must be removed from the appliance before it is scrapped.
 - Disconnect the charging adapter before removing the battery.
1. Ensure the device is discharged of all power. To do this, switch it on and allow it to run until it stops.
 2. Remove the T-blade.
 3. Pry and remove the top decorative panel and top housing.
 4. Unscrew the 4 screws on the inner housing, and take off the top inner housing.
 5. Take out the assembly of battery and printed circuit board.
 6. Disconnect the battery from the circuit board.
- Used batteries must be removed from the appliance and disposed of at an appropriate official recycling/collection point.
 - Do not attempt to operate the shaver once you have opened it.

ADAPTER SPECIFICATIONS

Manufacturer address and registration number	Spectrum Brands (UK) Limited, Regent Mill, Fir Street, Failsworth, Manchester M35 0HS Company number: 02394603
Adapter model number	PA-0510U
Input voltage	100 - 240 V~
Input AC Frequency	50/60Hz
Output voltage	5.0 V ===
Output current	1.0 A
Output power	5.0 W
Average active efficiency	≥73.7%
Efficiency at 10%	-
No load power consumption	≤0.1W

RECYCLING



To avoid environmental and health problems due to hazardous substances, appliances and rechargeable and non-rechargeable batteries marked with one of these symbols must not be disposed of with unsorted municipal waste. Always dispose of electrical and electronic products and, where applicable, rechargeable and non-rechargeable batteries, at an appropriate official recycling/ collection point.

SERVICE AND GUARANTEE



Defects affecting product functionality appearing within the guarantee period will be corrected by replacement or repair at our option provided the product is used and maintained in accordance with the instructions. Your statutory rights are not affected.

This warranty shall not be valid where it is contrary to U.S. and other applicable laws, or where the warranty would be prohibited under

any economic sanctions, export control laws, embargos, or other restrictive trade measures enforced by the United States or other applicable jurisdictions. This includes, without limitation, any warranty claims implicating parties from, or otherwise located in, Cuba, Iran, North Korea, Syria and the Crimea region.

To claim an extra 1 year guarantee, register your product online within 28 days of purchase.


Register at: <https://uk.remington-europe.com/product-registration>

Consumables are guaranteed only for their recommended lifecycle. Replacement/spare parts* are excluded and are only covered by a 1 year warranty.

*Examples include, but are not limited to, adaptors, haircare attachments, grooming accessories, etc.

SERVICE CENTRE

UNITED KINGDOM

 0800 212 438 (free call mainland UK)

Spectrum Brands (UK) Ltd


Fir Street, Failsworth, Manchester

M35 0HS, UK

www.remington.co.uk

productsupport@Remington.co.uk

IRELAND

 142 951 40

Remington Consumer Products,

Unit B12, Ballymount Corporate Park,

Ballymount, Dublin 12

<https://ie.remington-europe.com>

productsupport@Remington.co.uk

Ref. No. MB7050

Type No. MB09A

20/UK/ MB7050 T22-7001365-B Version 05 /20

Remington® is a Registered Trade Mark of Spectrum Brands, Inc., or one of its subsidiaries.
Spectrum Brands (UK) Ltd

Fir Street,
Failsworth,
Manchester

M35 0HS

www.remington.co.uk

© 2020 Spectrum Brands, Inc.